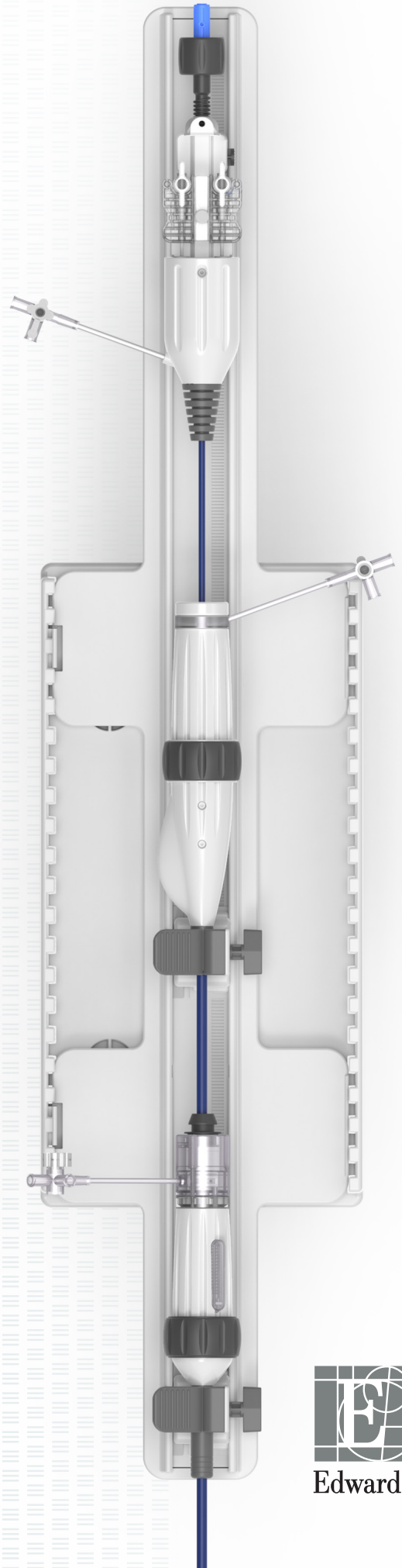
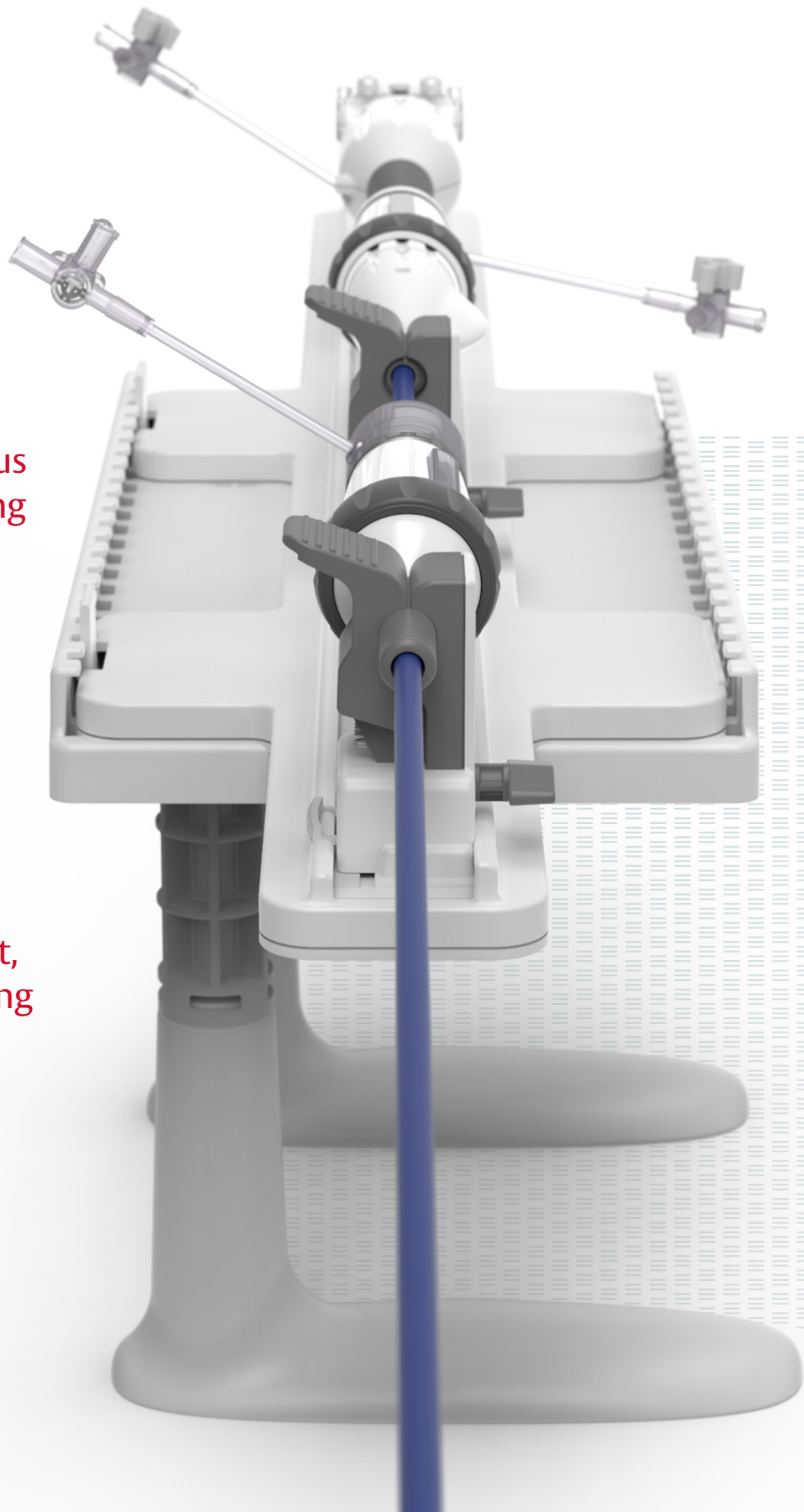


Introducing the new PASCAL Stabilizer Rail System

Designed to add stability to enable
controlled catheter movements

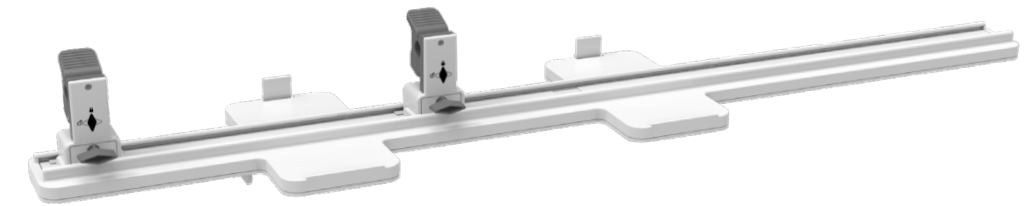


Edwards Lifesciences reaffirms its continuous drive toward improving transcatheter mitral and tricuspid leaflet repair. The new PASCAL Stabilizer Rail System provides enhanced stability which enables controlled, single-handed catheter advancement, retraction, and torquing



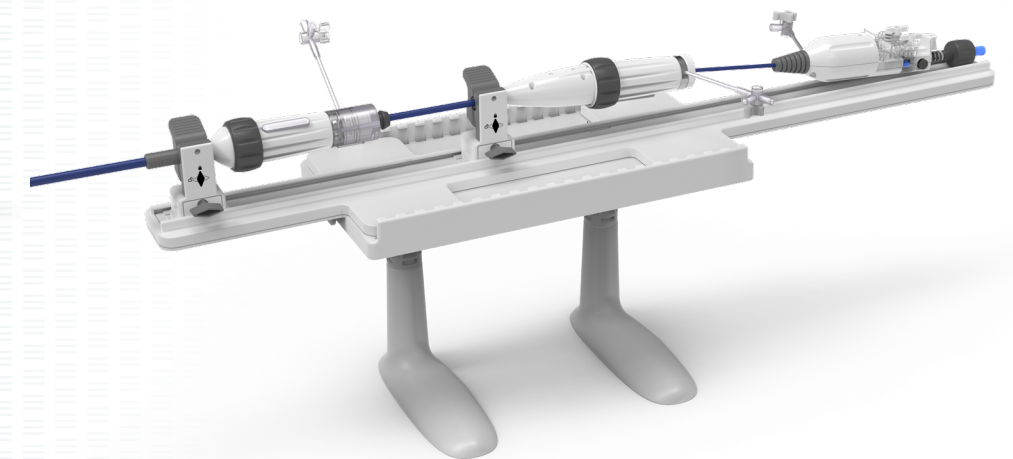
Increased stability

A new rail-based system with multiple stabilizers to advance, retract, and torque catheters



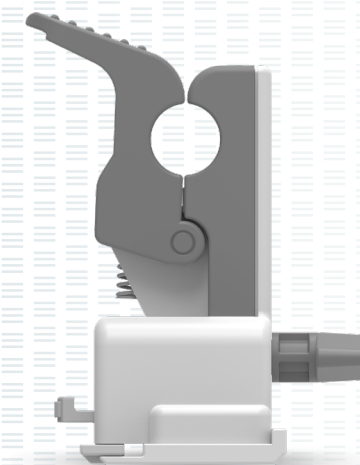
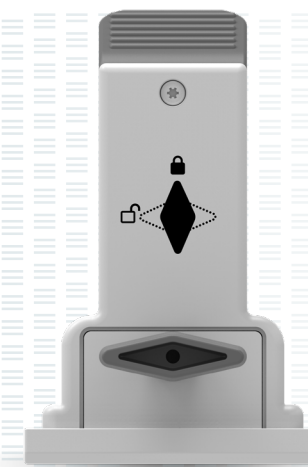
Intuitive design

Secure stabilizers to allow for stable, incremental movements and fine adjustments



Simplified process

Ease-of-use enhancements help reduce unintended catheter movements throughout the procedure



A new Stabilizer Rail System designed to enhance your experience with the PASCAL platform

Experience the PASCAL Platform with the new Stabilizer Rail System

Central spacer

Unique central spacer is designed to bridge the coaptation gap to minimize regurgitation

Elongation

Device elongation features a slim profile for repositioning and navigation in dense chordae

Nitinol design

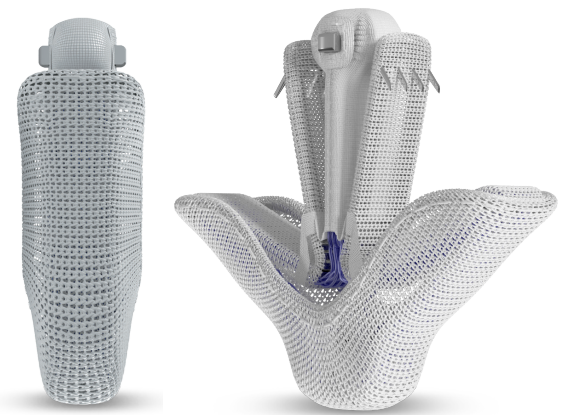
Superelastic Nitinol is designed for passive closure and acute implant flexing

Independent clasps

Independent grasping and a single row of retention elements allow for optimal placement on leaflets



PASCAL Implant*



PASCAL Ace Implant*

Find out more at [Edwards.com/PASCAL](https://www.edwards.com/PASCAL)
and speak to your Edwards Lifesciences
representative

*Not to scale.

For professional use. For a listing of indications, contraindications, precautions, warnings, and potential adverse events, please refer to the Instructions for Use (consult [eifu.edwards.com](https://www.eifu.edwards.com) where applicable).

Edwards devices placed on the European market meeting the essential requirements referred to in Article 3 of the Medical Device Directive 93/42/EEC bear the CE marking of conformity.

Edwards, Edwards Lifesciences, the stylized E logo, PASCAL, and PASCAL Ace are trademarks or service marks of Edwards Lifesciences Corporation. All other trademarks are the property of their respective owners.

© 2021 Edwards Lifesciences Corporation. All rights reserved. PP-EU-1675 v1.0

Edwards Lifesciences • Route de l'Etraz 70, 1260 Nyon, Switzerland • [edwards.com](https://www.edwards.com)

